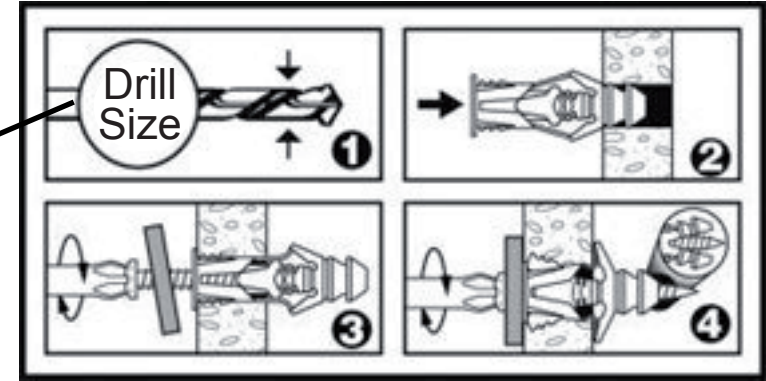


Technical Specification

Installation Instructions



	Size	Material	Drill Size	PULL Max lbs	PULL Safe lbs	SHEAR Max lbs	SHEAR Safe lbs	PULL Max kg	PULL Safe kg	SHEAR Max kg	PULL Safe kg
DRYWALL 3/8"	# 6 (Beige)	Polyethylene	1/4"	32	8	52	13	15	4	24	6
	# 8 (Gris / Grey)	Polyethylene	1/4"	35	9	60	15	16	4	27	7
	# 10 (Bleu / Blue)	Polyethylene	5/16"	45	11	75	19	20	5	34	9
	# 12 (Vert / Green)	Polyethylene	3/8"	60	15	90	23	27	7	41	10
DRYWALL 1/2"	# 6 (Beige)	Polyethylene	1/4"	36	9	58	15	16	4	26	7
	# 8 (Gris / Grey)	Polyethylene	1/4"	42	11	70	18	19	5	32	8
	# 10 (Bleu / Blue)	Polyethylene	5/16"	58	15	92	23	26	7	42	10
	# 12 (Vert / Green)	Polyethylene	3/8"	74	19	121	30	34	8	55	14
DRYWALL 5/8"	# 6 (Beige)	Polyethylene	1/4"	60	15	91	23	27	7	41	10
	# 8 (Gris / Grey)	Polyethylene	1/4"	64	16	102	26	29	7	46	12
	# 10 (Bleu / Blue)	Polyethylene	5/16"	88	22	154	39	40	10	70	17
	# 12 (Vert / Green)	Polyethylene	3/8"	132	33	204	51	60	15	93	23
Concrete 3000 PSI	# 6 (Beige)	Polyethylene	1/4"	240	60	400	100	109	27	181	45
	# 8 (Gris / Grey)	Polyethylene	1/4"	275	69	500	125	125	31	227	57
	# 10 (Bleu / Blue)	Polyethylene	5/16"	400	100	800	200	181	45	363	91
	# 12 (Vert / Green)	Polyethylene	3/8"	500	125	900	225	227	57	408	102