

# Technical Specifications

## Product Description

The anchor is designed to offer you the maximum: A fine centered point that helps guide the anchor into the wall with flawless precision. A sharp cutting edge that reduces the force required to cut the material, making it a self-drilling anchor without pre-drilling. Also, a sharp profile thread that cuts deeply into the hole to ensure maximum holding power and stability.



## Features & Benefits

Fast and easy to install  
 No pre-drilling, the only tool required is a screwdriver  
 Designed to install smoothly and easily through drywall  
 Can easily be removed  
 Available material: Nylon  
 Note: Not recommended for ceiling applications.

## Product Description

# 6 Nylon  
 # 8 Long Nylon

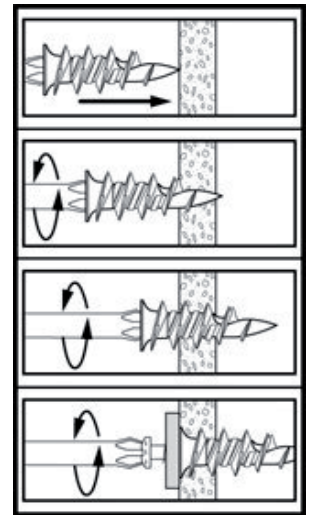
## Installation instructions

- 1 - Point the WallDriller™ the wall using only a screwdriver.
- 2 - Turn clockwise until flush with surface and firmly in place. (Do not over torque)
- 3 - Insert the screw in the object you need to afixand turn clockwise until firmly in place.

## Tools Required



No Pre-Drilling  
 Screw Driver: # 2 Phillips



## Load Capacities

Material	Size	Material	PULL MAX lbs	PULL SAFE lbs	SHEAR MAX lbs	PULL SAFE lbs	PULL MAX kg	PULL SAFE kg	SHEAR MAX kg	SHEAR SAFE kg
Drywall 3/8"	# 6	Nylon	40	20	92	46	18	9	42	21
	# 8 Long		45	23	100	50	20	10	45	23

Material	Size	Material	PULL MAX lbs	PULL SAFE lbs	SHEAR MAX lbs	PULL SAFE lbs	PULL MAX kg	PULL SAFE kg	SHEAR MAX kg	SHEAR SAFE kg
Drywall 1/2"	# 6	Nylon	45	23	103	52	20	10	47	23
	# 8 Long		50	25	110	55	23	11	50	25